

# CLEMP

## Need to attach it! ~ CLEMP it!

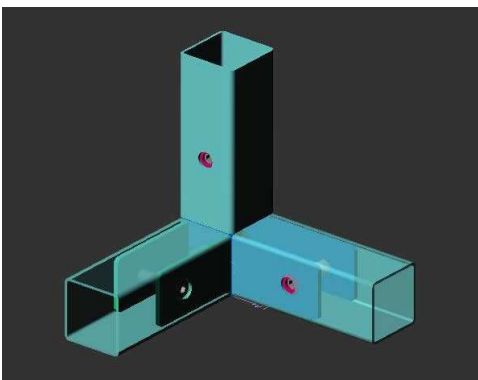
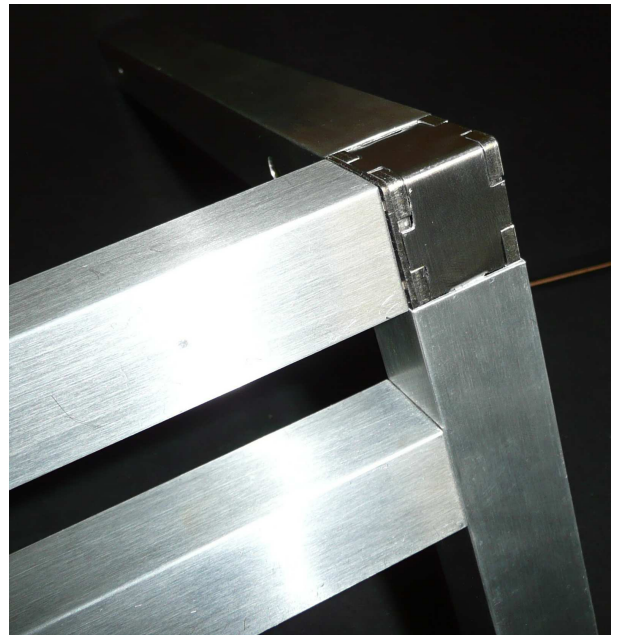
The **Clemp** internal tube securing clamp system is **easy to use** and **versatile**. With a large range of available configurations, tubes of different and hard-to-weld materials can now easily, and cost effectively, be combined in structures, frames, furniture, .... the list goes on.

No more need for welding when you want to construct a frame, bookcase, workbench easily and quickly. Just **Clemp** it!

If you **Clemp** it, you will have your project completed quickly and it will be structurally sound. All you need to do is cut your tube material to size, drill a hole through one side wall, 40mm from each end of the tubing to be connected, slide your **Clemp** configuration in and fasten with an Allen Key!

Nothing protrudes past the tube outer perimeter. Your frame looks neat and professional, and best of all, you don't need to be a tradesman to use it. That stainless steel coffee table you always wanted, but couldn't build because you do not have the right equipment to weld it, well, now you can!

## Need to build it! ~ CLEMP it!



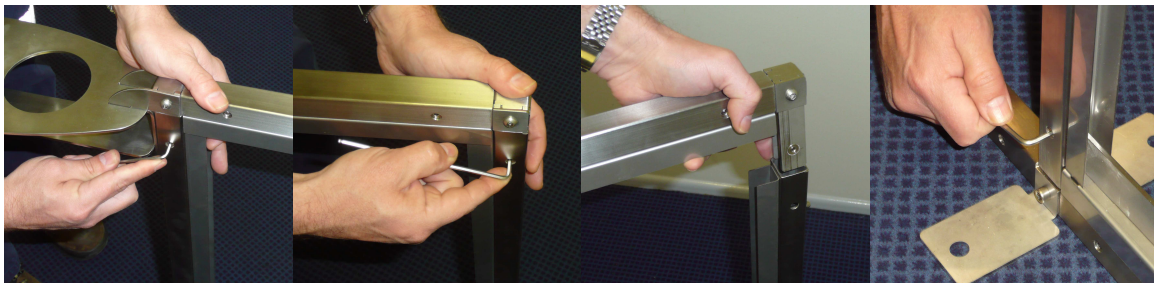
Those fancy stainless steel picture frames, male or female, now you can do it yourself.

Bracket attachments, box corners, 45 degree angles, hinges, T-sections, X-sections, 6 way connections and much, much more, all available for your next project. **Just cut, drill, Clemp! Easy!**

Do you need a collapsible frame, box, structure? Just **Clemp** it. When the time comes to collapse your structure, just release the tension on the internal clamping screws at desired locations and slide the tube off the **Clemp**. To re-attach it, simply slide it back in, give the screw a partial turn and your structure is again just as secure as before. Over and over, every time, first time.

The **Clemp** system is a new and exciting innovative product made from steel, stainless steel or aluminium, depending on the application. Our range further offers **clemps** specifically designed for permanent high strength applications right through to quick release removable ones.

### Next time, always,..... just Clemp it!



Australian Patent applied for (AU2010903525)  
International Patent pending

**Brenton Blue Pty Ltd ACN 142 904 078**

Postal Address  
GPO Box 1352  
Brisbane  
Queensland  
Australia 4001

Administration  
Unit 4, 70  
Fison Avenue West  
Eagle Farm, Queensland  
Australia 4009  
Tel: +61 (7) 1300 1234  
Fax: +61 (7) 1300 1235

[www.brentonblue.com.au](http://www.brentonblue.com.au)

Operations  
Unit 1, 11  
Judds Court  
Springwood, Queensland  
Australia 4127  
Tel: +61 (7) 3208 1540  
Fax: +61 (7) 3208 1541



# BRENTONBLUE

SOLUTION INNOVATION